



ergonomic products

K&A MANUFACTURING

6703 ZINSER ST., SCHOFIELD, WI 54476

PHONE: 800.298.4351 FAX: 866.882.9475

www.raproducts.com

VERSION DATED: 3/7/12

TOOLS REQUIRED FOR ASSEMBLY:

CORDLESS DRILL
#2 PHILLIPS HEAD DRIVER BIT

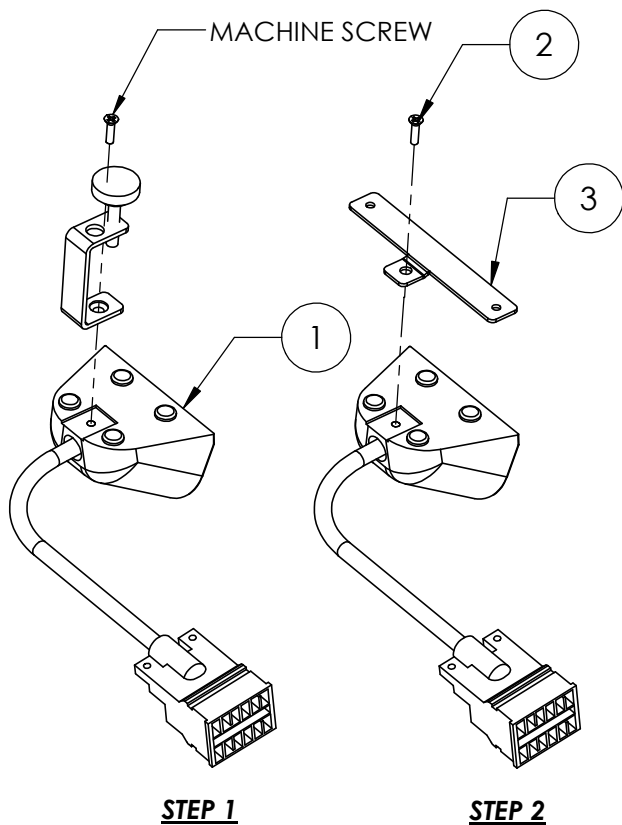
READ ALL THE INSTRUCTIONS BEFORE BEGINNING

PRMB-MINI SURFACE MOUNT POWER RECEPTACLE BRACKET INSTRUCTIONS TO CONVERT FROM CLAMP MOUNT TO SURFACE MOUNT :

STEP 1: REMOVE THE CLAMP FROM THE PRM **1** BY REMOVING THE MACHINE SCREW THAT HOLDS IT IN PLACE. SAVE THE SCREW AND DISCARD THE CLAMP.

STEP 2: ATTACH THE BRACKET **3** TO THE PRM **1** USING THE SCREW THAT ATTACHED THE CLAMP. ORIENT THE BRACKET AS SHOWN AT LEFT.

STEP 3: PLACE THE PRM RECEPTACLE AT THE DESIRED LOCATION AND ATTACH IT WITH (2) RESEX DRIVE SCREWS **4** .



ITEM #	PART #	DESCRIPTION	QTY.
1	PRM	PRMB-MINI SURFACE MOUNT RECEPTACLE	1
2	USE EXISTING	10-32 x 5/8 PHILLIPS FLAT HEAD MACHINE SCREW	1
3	800709	PRM SURFACE MOUNT BRACKET	1
4	50072	8 x 3/4 PHILLIPS PAN HEAD RESEX DRIVE SCREW	2

