



ergonomic products

**K&A MANUFACTURING**

6703 ZINSER ST., SCHOFIELD, WI 54476  
 PHONE: 800.298.4351 FAX: 866.882.9475  
 www.raproducts.com

**VERSION DATED: 2/28/13**

**READ ALL THE INSTRUCTIONS BEFORE BEGINNING**

**TOOLS REQUIRED FOR ASSEMBLY:**

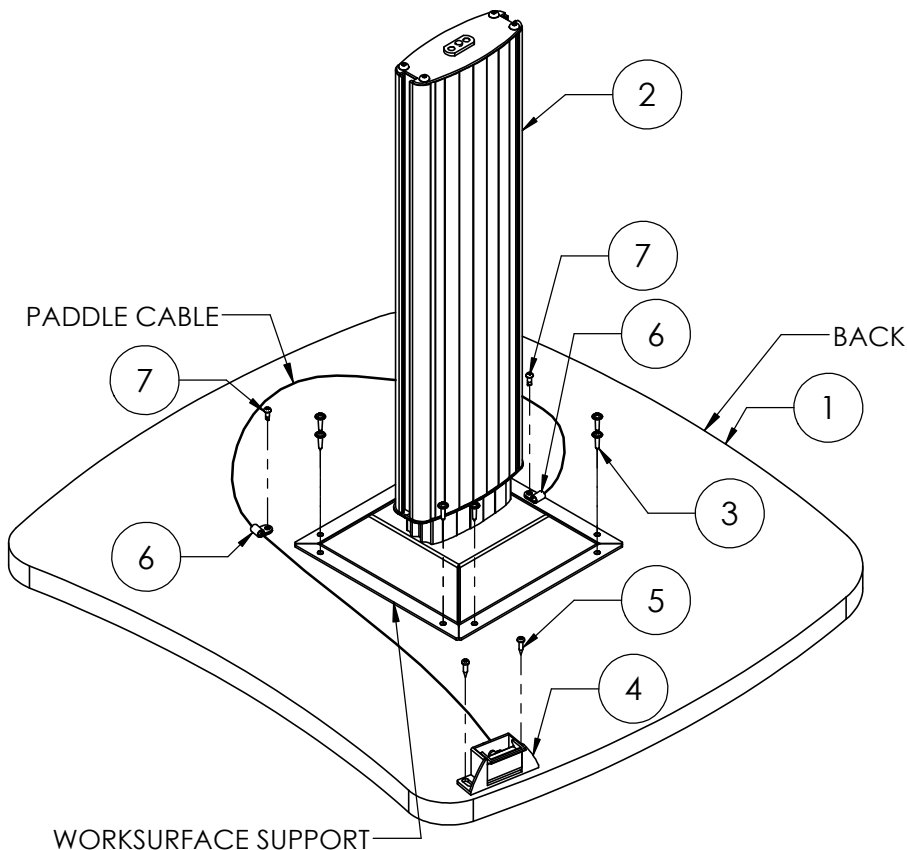
- CORDLESS DRILL
- #2 PHILLIPS HEAD DRIVER BIT
- 3/16" HEX HEAD DRIVER BIT
- OR ALLEN WRENCH
- TAPE MEASURE
- LEVEL

**NewHeights GAS LIFT WORKSTATION WITH GLIDES ASSEMBLY INSTRUCTIONS:**

**STEP 1:** LAY THE WORKSURFACE **1** ON A PROTECTED SURFACE WITH THE PILOT HOLES FACING UP. PLACE THE COLUMN ASSEMBLY **2** ON THE WORKSURFACE AS SHOWN. **CAUTION: DO NOT PUSH THE SLOTTED RELEASE MECHANISM INSIDE THE WORKSURFACE SUPPORT BECAUSE THE LIFT COLUMN WILL RISE UP QUICKLY.** ALIGN THE HOLES IN THE WORKSURFACE SUPPORT WITH THE PILOT HOLES IN THE WORKSURFACE. THE SLOT WHERE THE CABLE COMES OUT OF THE WORKSURFACE SUPPORT MUST FACE THE BACK OF THE WORKSURFACE. ATTACH THE COLUMN ASSEMBLY TO THE WORKSURFACE WITH (8) WOOD SCREWS **3**. DO NOT OVER-TIGHTEN THE SCREWS. USE A LOW TORQUE SETTING ON THE DRILL.

**STEP 2:** WRAP THE PADDLE CABLE AROUND THE SIDE OF THE COLUMN ASSEMBLY. ALIGN THE HOLES IN THE ACTUATOR **4** WITH THE PILOT HOLES ON THE LEFT SIDE OF THE WORKSURFACE. ATTACH IT WITH (2) RESEX DRIVE SCREWS **5**. IT CAN ALSO BE ATTACHED TO THE RIGHT SIDE OF THE WORKSURFACE. **USE CAUTION WHEN HANDLING THE CABLE ACTUATOR TO NOT DEPRESS IT AS THIS WILL CAUSE THE LIFT COLUMN TO RISE UP QUICKLY.**

**STEP 3:** PLACE (2) CABLE CLAMPS **6** AROUND THE PADDLE CABLE AT THE LOCATIONS INDICATED. ATTACH ONE OF THE CLAMPS TO THE WORKSURFACE SUPPORT WHERE THE CABLE COMES OUT OF THE SLOT USING A SELF DRILLING SCREW **7**. A PILOT HOLE IS PROVIDED. ATTACH THE OTHER CLAMP DIRECTLY TO THE WORKSURFACE TOWARD THE FRONT. NO PILOT HOLE IS PROVIDED.



**STEPS 1-3**

| ITEM # | PART # | DESCRIPTION                               | QTY |
|--------|--------|---|-----|
| 1      | VARIES | WORKSURFACE                               | 1   |
| 2      | 800569 | GAS LIFT COLUMN ASSEMBLY                  | 1   |
| 3      | 51708  | M5 x 18mm SQ/PH/WSHR HEAD WOOD SCREW      | 8   |
| 4      | 52695  | BOTTOM MOUNT CABLE ACTUATOR               | 1   |
| 5      | 50072  | 8x3/4 PHILLIPS PAN HEAD RESEX DRIVE SCREW | 2   |
| 6      | 52604  | 3/16" CABLE CLAMP                         | 2   |
| 7      | 52678  | 8-18X1/2 PHILLIPS PAN SELF DRILL SCREW    | 2   |
| 8      | VARIES | GAS LIFT FRONT LEG ASSEMBLY               | 1   |
| 9      | 52424  | 3/8-16 X 1/2 LOW HEAD SOCKET SCREW        | 4   |
| 10     | 52425  | 3/8 x 1/2 x 1/8 HIGH COLLAR LOCK WASHER   | 4   |
| 11     | 52403  | 3/8-16 x 1/2 BRIDGE WELD NUT              | 4   |
| 12     | VARIES | GAS LIFT REAR LEG ASSEMBLY                | 1   |
| 13     | 52059  | 5/8" SHORTY PLUG                          | 4   |



ergonomic products

K&A MANUFACTURING

6703 ZINSER ST., SCHOFIELD, WI 54476

PHONE: 800.298.4351 FAX: 866.882.9475

www.raproducts.com

VERSION DATED 2/28/13

**STEP 4:** WITH THE HELP OF AN ASSISTANT, LAY THE COLUMN AND WORKSURFACE ASSEMBLY ON A PROTECTED SURFACE WITH THE FRONT FACING UP. PLACE (2) LOCK WASHERS **10** ON (2) SOCKET SCREWS **9**. INSERT THESE THROUGH THE HOLES IN THE FRONT LEG ASSEMBLY **8**. THIS IS THE SHORTEST LEG ASSEMBLY. SOME GAS LIFT WORKSTATIONS WILL HAVE (2) LEG ASSEMBLIES OF THE SAME SIZE. IN THAT CASE EITHER LEG ASSEMBLY CAN BE USED. THREAD (2) WELD NUTS **11** ONTO THE SOCKET SCREWS FROM THE BACK. THE SIDES OF THE WELD NUTS WITH THE PROJECTIONS MUST FACE THE LEG BRACKET. SEE DETAIL A.

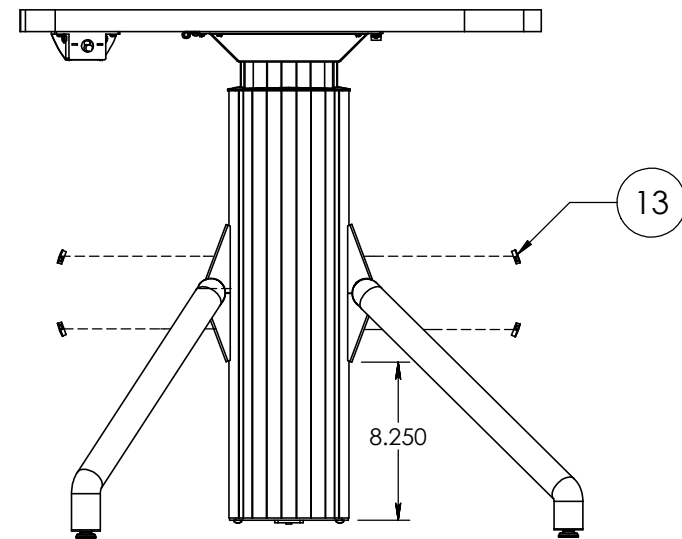
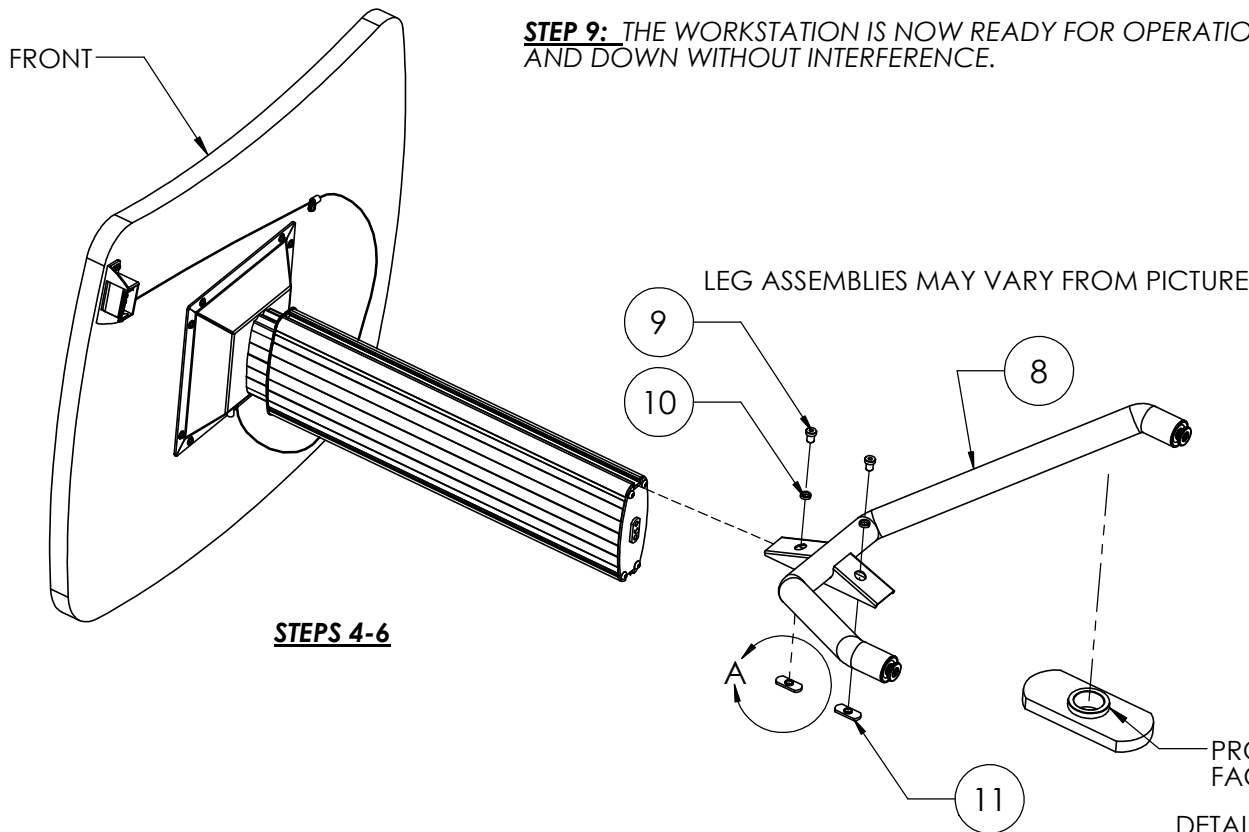
**STEP 5:** SLIDE THE WELD NUTS **11** ON THE FRONT LEG ASSEMBLY **8** INTO THE SLOT ON THE COLUMN AND WORKSURFACE ASSEMBLY. SET THE BOTTOM OF THE LEG ASSEMBLY AT 8-1/4" FROM THE BOTTOM OF THE COLUMN ASSEMBLY AS SHOWN BELOW RIGHT. TIGHTEN THE TOP SOCKET SCREW **9** JUST ENOUGH SO THE LEG ASSEMBLY WILL NOT SLIDE UP OR DOWN ON THE COLUMN. TIGHTEN THE BOTTOM SOCKET SCREW JUST TIGHT ENOUGH SO THAT THE LEG ASSEMBLY CAN BE ROTATED SLIGHTLY.

**STEP 6:** TURN THE ASSEMBLY OVER SO THE FRONT IS FACING DOWN. REPEAT **STEP 6** USING THE REAR LEG ASSEMBLY **12** THIS IS THE LONGER LEG ASSEMBLY.

**STEP 7:** SET THE WORKSTATION UPRIGHT ON THE FLOOR IN ITS FINAL LOCATION. PUTTING DOWNWARD PRESSURE ON EACH SIDE OF THE WORKSURFACE, ROCK THE WORKSTATION SLIGHTLY UNTIL ALL (4) GLIDES ARE RESTING ON THE FLOOR. CHECK TO SEE IF THE WORKSURFACE IS LEVEL. IF IT IS NOT, PUSH THE FRONT AND BACK LEG ASSEMBLIES **8** AND **12** DOWN EQUALLY ON THE HIGH SIDE OF THE WORKSTATION UNTIL IT IS LEVEL. FULLY TIGHTEN ALL (4) SOCKET SCREWS **9**.

**STEP 8:** INSERT (4) SHORTY PLUGS **13** INTO THE SCREW ACCESS HOLES ON THE LEG BRACKETS.

**STEP 9:** THE WORKSTATION IS NOW READY FOR OPERATION. MAKE SURE THE WORKSURFACE CAN TRAVEL UP AND DOWN WITHOUT INTERFERENCE.



**STEPS 7-9**

DETAIL A